



笠置町へのアクセス Access

公共交通機関で

[JR] 京都駅→(JR奈良線快速)→加茂駅→(JR関西本線)→笠置駅(約51分)
[空港より 南海・JR] 関西空港駅(南海)→(南海空港線急行)→新今宮駅(南海・JR)→(JR大和路線快速)→加茂駅→(JR関西本線)→笠置駅(JR/約108分)

Public Transportation

[JR] JR Kyoto Station→(Rapid Train on the JR Nara Line)→Kamo Station→(JR Kansai Main Line)→Kasagi Station (approx. 51 min.)
[From the Kansai International Airport (Nankai Line and JR)] Nankai Kansai-Airport Station→(Airport Express on Nankai Line)→Shin-Imamiya Station (Nankai Line/ JR)→(JR Yamatoji Rapid Service)→Kamo Station→(JR Kansai Main Line)→JR Kasagi Station (approx. 108 min.)

月・水・金・土曜日限定運行! JR加茂駅からのバス運行開始

JR加茂駅(西口)から笠置駅を結ぶ地域バスが、月・水・金・土曜日限定(祝日の場合も運行/年末年始運休)で運行中。予約不要、午前2便・午後2便と、笠置へのアクセスがもっと便利に。※1便あたり9名まで乗車可能

Only on Monday, Wednesday, Friday and Saturday!

Bus service from JR Kamo Station (has started operation).

The local bus service between JR Kamo Station (Western Entrance) and Kasagi Station operates only on Monday, Wednesday, Friday and Saturday (even when they are holidays/ suspended during the Year End and New Year period). No advance reservation is necessary. Accessing Kasagi has become easier, with two bus services both in the morning and the afternoon.
※Each bus has a maximum capacity of 9 passengers.

車で最寄りICから

○京奈和自動車道・山田川ICから国道163号経由 約30分 ○第2阪奈有料道路蓬萊出口から国道24号、国道163号経由 上野方面へ約30分
○京奈和自動車道山田川ICより国道163号経由 上野方面へ約30分 ○西名阪国道大内ICより国道163号経由 奈良方面へ約30分

From the nearest IC by car

○Yamadagawa IC of Keinawa Expressway→National Route 163 (approx. 30 min.)
○Horai Ramp of Dainii-Hanna Toll Road→National Route 24 and National Route 163 toward Ueno (approx. 30 min.)
○Yamadagawa IC of Keinawa Expressway→National Route 163 toward Ueno (approx. 30 min.)
○Oouchi IC of Meihan Expressway→National Route 163 toward Nara (approx. 30 min.)



音声ガイドアプリ

Pokkeで京都笠置のモデルコースをご案内

その旅に、物語を。



「Android」は
こちらから



「iPhone」は
こちらから

“Pokke”は、最高な旅に必須のアプリです。 Pokke is a wonderful, must-have app for tourists.

音声ガイドアプリ「Pokke」で京都笠置のモデルコースをご案内

- ①笠置寺ガイド～巨石に刻まれた姿の見えない仏さま～
- ②笠置寺の住職とめぐる巨石行場ツアー
- ③笠置～柳生 歴史の道ハイキングガイド
- ④ボルダリングの世界～笠置のボルダリングエリアを歩く～

The voice guide app Pokke recommends model sightseeing courses in Kasagi in Kyoto.

- ①Guide to Kasagi-dera Temple—A hidden Buddha engraved on a huge rock—
- ②Tour of ascetic practice sites with huge rocks, guided by the chief priest of Kasagi-dera Temple
- ③Guide to hiking on the historical road between Kasagi and Yagyu
- ④World of bouldering—Walk around the bouldering areas in Kasagi—

お問い合わせは
Inquiries

笠置町役場

Kasagi Town Hall

〒 619-1393 京都府相楽郡笠置町西通90-1

tel (0743) 95-2301

hp <http://www.town.kasagi.lg.jp>

笠置町役場

<http://kasagi-rock.kyoto/>

観光笠置

一般社団法人
(笠置町産業振興会館内)
Kasagi Tourist Association
(c/o Kasagi Town Industrial Promotion Center)

〒 619-1303 京都府相楽郡笠置町佃46

tel (0743) 95-2011

hp <http://www.kankou.kasagi.com>

笠置町商工会

Kasagi Town Association of
Commerce and Industry

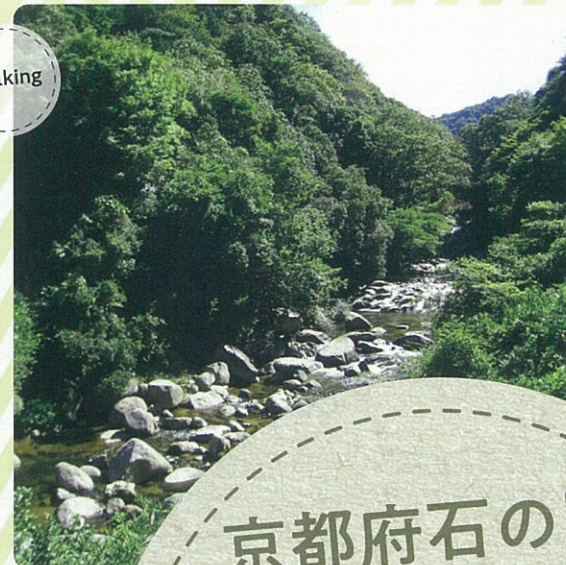
〒 619-1303 京都府相楽郡笠置町佃3-1

tel (0743) 95-2159

hp <http://kasagi.kyoto-fsci.or.jp>



Walking



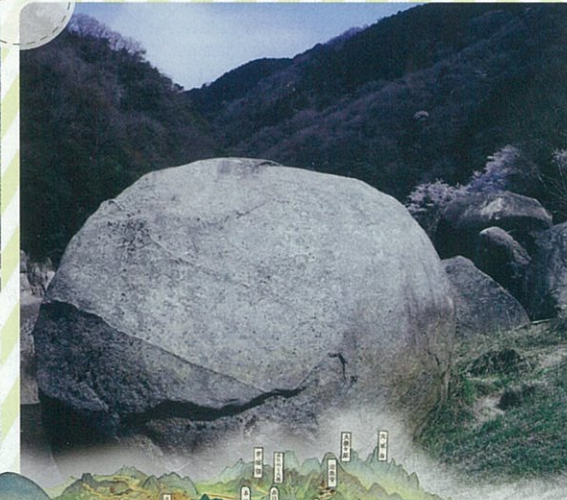
Gourmet

京都府石の国 笠置町 Kasagi Town, a Land of Magnificent Rocks and Stones in Kyoto Prefecture

History



Outdoor



笠置町役場

Kasagi Town Hall

笠置町観光大使 笠やん
Sightseeing Ambassador of Kasagi Town:
"Kasa-Yan"





①笠置キャンプ場

／ Kasagi Campsite

料金
中学生以上500円
小学生以上300円
Price
Junior high school
student or older: 500yen
Elementary
school
students: 300yen

JR笠置駅から徒歩約5分。木津川にかかる笠置大橋横の河川敷に広がる広大なキャンプ場。車で河川敷まで入場できます。木津川の自然を満喫できることはもちろん、M5(BBQ道具レンタルショップ)等も隣接する便利さも合わせ持っており、シーズン中の土・日には多くのキャンパーで賑わいを見せるほどの人気ぶり、カップルからファミリーまで気軽に、そして安全にアウトドアを楽しんでいただけます。

地下1200メートルから湧き出る天然温泉「わかさぎ笠置いこいの館」までも徒歩10分と便利です。

Kasagi Campsite is about a five-minute walk from JR Kasagi Station. It is located in a large dry riverbed near the Kasagi-Oohashi Bridge, which crosses the Kizu River. You can drive your car to the riverbed. Surely you can enjoy the nature of the Kizu River. For your convenience, there is a rental shop for BBQ equipment, M5, adjacent to the site. The site is so popular that on weekends during the peak season it is full of many campers, including families and couples enjoying outdoor activities safely and easily. You have easy access to a hot spring, Wakasagi Kasagi Ikoine Yakata (Kasagi Recreation Palace), a ten-minute walk from the site. It is a natural hot spring gushing from 1200 meters underground.



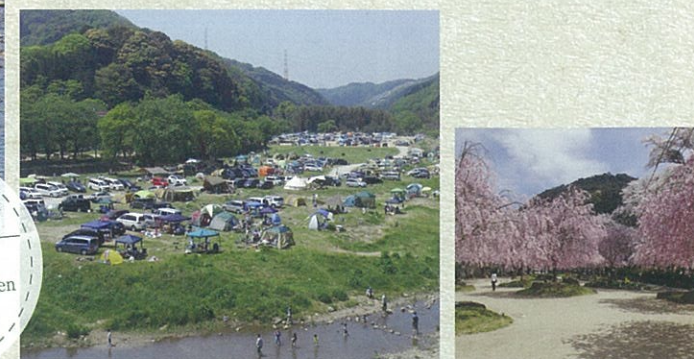
④わかさぎ温泉 笠置いこいの館

／Wakasagi Hot Spring,
Kasagi Ikoine Yakata (Kasagi Recreation Palace)

料金
大人800円
子供400円
Admission Fee
¥800 for Adults
¥400 for
Children

笠置キャンプ場から徒歩10分の場所にある「笠置いこいの館」は大浴場のほかレストランもあり、親子丼や唐揚げ定食の他、季節の食材を使った四季折々の食事が楽しめます。大浴場は笠置山麓の地下1200mから湧出る天然温泉です。また、とりとしいた独特のヌメリは美肌効果があります。アウトドアで遊んだ後は、疲れた身体を美味しい食事と温泉で癒してください。

Kasagi Ikoine Yakata (Kasagi Recreation Palace) is a ten-minute walk from the Kasagi Campsite. The facility contains a large bathhouse and a restaurant. The restaurant serves not only oyako-donburi (a bowl of rice topped with chicken and eggs) and a fried chicken set meal but also dishes using seasonal ingredients. The bathhouse has a natural hot spring that springs from 1200 meters below the ground of Mount Kasagi. The water has a distinct sliminess, effective for making your skin smooth and beautiful. After enjoying outdoor activities, please heal and soothe your body in the hot spring, and savor good foods.



グルメ

／Gourmet

自遊宿 料理旅館松本亭／きじ石焼
Japanese inn and restaurant Matsumoto-tei / Stone-grilled pheasant

笠置の魅力は四季を通じて旬の味が楽しめることです。春の山菜、初夏の鮎から秋は茸、冬はぼたん鍋、かも鍋、名物きじ鍋、鯉は年中と美味盛りたくさん。笠置の風情そのままの自然の味を選び抜いた料理は四季折々の味わいが楽しめます。

One of the greatest appeals of Kasagi is that you can enjoy delicacies of the season all through the year. We have a varied menu of savory dishes. In spring you can eat edible wild plants; between early summer to fall, sweetfish and mushrooms; in winter, wild boar hot pot, duck meat hot pot, and pheasant hot pot (local specialty); and through the year, carp. We have selected ingredients from local products which give you a taste of the nature of Kasagi. Surely you will appreciate the tastes of all seasons.

①自遊宿 料理旅館松本亭

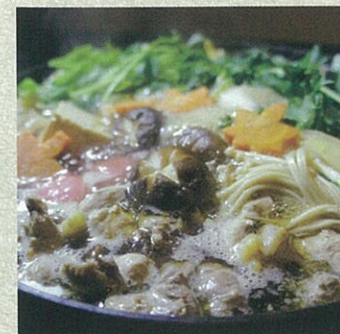
／Jiyu-yado Matsumoto-tei Ryori-Ryokan (ryokan for Japanese cuisine)
きじ料理専門店 きじ鍋は第3回全国ご当地鍋フェスタ「鍋-1グランプリ」にて優勝。

Restaurant Specializing in Pheasant Cuisine Our pheasant hot pot won the championship at the 3rd National Festa of Local Hot Pots, Pot-1 Grand Prix.

②料理旅館よしや

／Yoshiya Ryori-Ryokan (ryokan for Japanese cuisine)
きじ料理をはじめ鯉の活造りやかも鍋、ぼたん鍋もお楽しみいただけます。

You can enjoy pheasant dishes as well as carp sashimi, duck hot pot and wild boar hot pot.



自遊宿 料理旅館松本亭／きじ鍋
Japanese inn and restaurant Matsumoto-tei / Pheasant hot pot

③笠置いこいの館

／Kasagi Ikoine Yakata
(Kasagi Recreation Palace)

レストランでは親子丼や唐揚げ定食の他、季節の食材を使った四季折々の食事が楽しめます。

We serve oyako-donburi (a bowl of rice topped with chicken and eggs) and a fried chicken set meal. Seasonal dishes using seasonal ingredients are also available.



スイーツ

／Sweets

352円
(税抜)
¥352
(excluding tax)



STATION!!／宇治抹茶のセミフレッド
STATION!!／Uji matcha-flavored semifreddo

④STATION!!／STATION!!

2017年、JR笠置駅にオープン！女性のライフスタイルを提案しようと、ネイルサロンとカフェが融合したオシャレスポットです。セミフレッドとは、イタリア発祥でアイスとケーキの中間的なスイーツなのだそう。店主オリジナルのレシピで丁寧に作り上げられた、軽い口当たりと濃厚な抹茶が後を引く新食感をぜひお試しください！

"STATION!!" opened inside the building of JR Kasagi Station in 2017. It is a fashionable spot that integrates a nail salon and a café, offering an attractive female lifestyle. Semifreddo is a sweet combining ice-cream and cake, originating in Italy. Based on our original recipe, carefully prepared semifreddo allows you to enjoy the novel smooth texture and richness of Matcha, which remains in the mouth. Please give it a try!

自然と癒しの笠置町へ KASAGI TOWN Offering You Wonderful Nature and Relaxation

笠置町のグルメ Cuisine in Kasagi

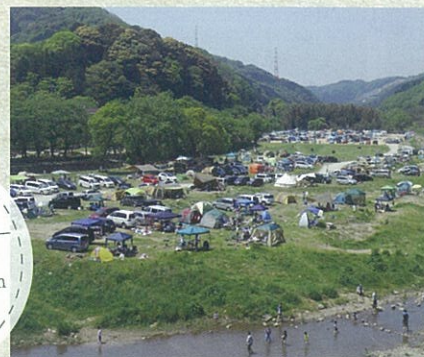




①笠置キャンプ場

／ Kasagi Campsite

料金
中学生以上500円
小学生以上300円
Price
Junior high school
student or older: 500yen
Elementary
school
students: 300yen



JR笠置駅から徒歩約5分。木津川にかかる笠置大橋横の河川敷に広がる広大なキャンプ場。車で河川敷まで入場できます。木津川の自然を満喫できることはもちろん、M5(BBQ道具レンタルショップ)等も隣接する便利さも合わせ持っており、シーズン中の土・日には多くのキャンパーで賑わいを見せるほどの人気ぶりで、カップルからファミリーまで気軽に、そして安全にアウトドアを楽しんでいただけます。地下1200メートルから湧き出る天然温泉「わかさぎ笠置いこいの館」までも徒歩10分と便利です。

Kasagi Campsite is about a five-minute walk from JR Kasagi Station. It is located in a large dry riverbed near the Kasagi-Oohashi Bridge, which crosses the Kizu River. You can drive your car to the riverbed. Surely you can enjoy the nature of the Kizu River. For your convenience, there is a rental shop for BBQ equipment, M5, adjacent to the site. The site is so popular that on weekends during the peak season it is full of many campers, including families and couples enjoying outdoor activities safely and easily. You have easy access to a hot spring, Wakasagi Kasagi Ikoino Yakata (Kasagi Recreation Palace), a ten-minute walk from the site. It is a natural hot spring gushing from 1200 meters underground.



④わかさぎ温泉

笠置いこいの館

／Wakasagi Hot Spring,
Kasagi Ikoino Yakata (Kasagi Recreation Palace)

料金
大人800円
子供400円
Admission Fee
¥800 for Adults
¥400 for Children

笠置キャンプ場から徒歩10分の場所にある「笠置いこいの館」は大浴場のほかレストランもあり、親子丼や唐揚げ定食の他、季節の食材を使った四季折々の食事が楽しめます。大浴場は笠置山麓の地下1200mから湧出る天然温泉です。また、とりとした独特のヌメリは美肌効果があります。アウトドアで遊んだ後は、疲れた身体を美味しい食事と温泉で癒してください。

Kasagi Ikoino Yakata (Kasagi Recreation Palace) is a ten-minute walk from the Kasagi Campsite. The facility contains a large bathhouse and a restaurant. The restaurant serves not only oyako-donburi (a bowl of rice topped with chicken and eggs) and a fried chicken set meal but also dishes using seasonal ingredients. The bathhouse has a natural hot spring that springs from 1200 meters below the ground of Mount Kasagi. The water has a distinct sliminess, effective for making your skin smooth and beautiful. After enjoying outdoor activities, please heal and soothe your body in the hot spring, and savor good foods.

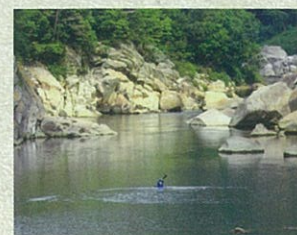


②笠置町カヌー

／ Canoeing in Kasagi Town

笠置カヌースクールは日本で最も歴史のあるカヌースクールです。笠置町の中心を流れる木津川の、流れのおだやかな中流域で、初心者から上級者まで楽しむことができます。水面をかき分けながら眺める景観は格別で、普段では味わえない経験ができます。

Kasagi Canoeing School is the oldest canoeing school in Japan. The Kizu River runs through the center of Kasagi Town. It flows slowly in the middle reaches, where paddlers ranging from beginners to those who are advanced can enjoy canoeing. Canoeing there offers you a special view while paddling and a unique experience entirely different from everyday life.



利用料
無料

No charge
for use is
required.

③ボルダリング

／Bouldering

笠置は、ボルダリングエリアとして1980年代から開拓され、現在120程度のルートがあるクラシック・クライミングエリアです。笠置大橋上流に広がるボルダリングエリアでは、大小の岩がゴロゴロしていて、関西屈指と言われています。ランディングも良く、多彩なコースは初級者から上級者まで楽しむことができます。

Kasagi Town has thrived as a bouldering area in Kyoto Prefecture since the 1980s, and currently has a classic climbing area with about 120 bouldering routes. Along the riverbank upstream from the Kasagi-Oohashi Bridge, there are many rocks, large and small, making it one of the best bouldering areas in the Kansai Region. It has a good landing and various courses that can be enjoyed by all climbers, from beginners to experienced climbers.



自然と癒しの笠置町へ

KASAGI TOWN Offering You Wonderful Nature and Relaxation

笠置町のアウトドア

Outdoor Activities in Kasagi Town





笠置町の歴史

History of Kasagi-machi

① 笠置寺

／ Kasagi-dera Temple

笠置寺は高さ15mの大きな岩に刻まれた「弥勒磨崖仏(みろくまがいぶつ)」を御本尊とする真言宗智山派のお寺です。山内には、東大寺のお水取りの起源といわれる正月堂をはじめとして多くのお堂や、巨石が点在する奈良時代からの修行場があります。現在の本堂、正月堂や毘沙門堂などは、室町時代に建造されたものです。

Kasagi-dera Temple is a Buddhist temple belonging to the Chisan School of the Shingon Sect. The principal image (go-honzon) of the temple is Miroku Magaibutsu (image carving of the Bodhisattva Maitreya) engraved on a huge rock measuring 15 m in height. On its grounds there are many halls, including Shogatsu-do Hall, which is the origin of Omizutori (Water-Drawing Ritual, an annual ritual at Todai-ji Temple in Nara), and ascetic practice places with scattered large rocks dating back to the Nara Period (710-793 A.D.). The current main hall of Shogatsu-do Hall and Bishamon-do Hall were built in the Muromachi Period (1392-1573 A.D.).



弥勒磨崖仏(みろくまがいぶつ)

／ Miroku Magaibutsu (image carving of Bodhisattva Maitreya)

本堂、正月堂前に立つ本尊弥勒大磨崖仏です。高さ15.6m、幅15m。日本最大最古の天人彫刻として崇められていたといえます。しかし幾度の火災のため、今見られるのは巨大な光背のみです。

Miroku Magaibutsu, the principal image (honzon), stood in front of the main hall of Shogatsu-do Hall. It was a Bodhisattva Maitreya image carved into a huge rock, measuring approximately 15.6 m in height and 15 m across. It was worshiped as the largest and oldest image made by heavenly beings (tennin). Due to repeated fires, it was completely lost, and only its large halo remains.

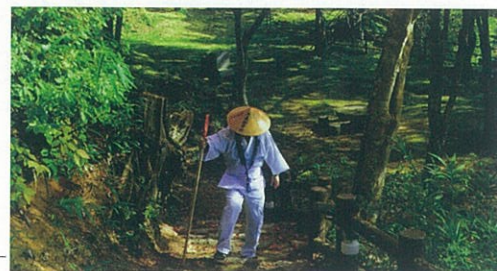
虚空蔵石(こくぞういし)／Kokuzo Bosatsu Rock

高さ12メートル、幅7メートルの断崖絶壁に、天衣をひるがえして座る優美な線彫りの磨崖菩薩像。奈良時代の作といわれています。

A Kokuzo Bosatsu image was engraved on a cliff that is 12 m high and 7 m wide. The image of the seated Kokuzo (limitless wisdom and compassion like the wide universe) Bosatsu wearing a heavenly garment was engraved in graceful curves. It is believed to have been made in the Nara Period.



拝観料
大人300円
中学生以下100円
Admission fee
¥300 for Adults
¥100 for Junior
high school students
or under



歴史／The History of the Temple

笠置寺の創建は古く、すでに2000年前から笠置山の巨石は信仰の対象となっていた。1300年前、東大寺の実忠和尚、その師 良弁僧正によって笠置山の巨大な巨石に仏像が彫刻され、その仏を中心として笠置山全体が一大修験行場として栄えたのである。平安時代 永承7年(1052)以後、世の末法思想の流行とともに笠置寺の磨崖仏は天人彫刻の仏として非常に信仰を受けたのである。鎌倉時代 建久2年(1191)藤原貞慶(後の解脱上人)が日本の宗教改革者として、その運動を笠置寺から展開するとき、笠置山は宗教の山、信仰の山として全盛を極めたのであった。しかし元弘元年(1331)8月27日に倒幕計画に失敗した後醍醐天皇を当山に迎えたことにより、攻防1ヶ月、ついに笠置山は全山焼亡。以後、室町時代に少々の復興をみたが、江戸中期より荒廃。ついに明治初期に無住の寺となった。明治9年、丈英和尚狐狸の住む荒れ寺に住して笠置寺の復興に尽くすこと20年、ようやく今日の山容となったのである。

The foundation of Kasagi-dera Temple dates back to ancient times. About 2000 years ago, the huge rocks at Mount Kasagi began to be worshiped. About 1300 years ago, monk Jitchu Kasho of Todai-ji Temple and his master Roben Sojo (the first chief priest Roben) engraved images of Buddha on the surface of the large rocks. The whole area of Mount Kasagi with the engraved images at the center attracted many worshippers, and flourished as an ascetic practice area. After 1052 in the Heian Period (794-1185 A.D.), Mappo-shiso (the belief that the "end of the world" was imminent) became prevalent, and the engraved images at the temple, which were believed to have been made by heavenly beings (tennin), were deeply worshiped. When FUJIWARA no Jokei (later known as Priest Gedatsu) started a religious reformation at Kasagi-dera Temple in 1191 during the Kamakura Period (1185-1333 A.D.), Mount Kasagi was revered and reached its zenith as a mountain of worship. However, after the failure of Emperor Go-Daigo's plot to overthrow the shogunal government (Japanese feudal government headed by a shogun) on August 27, 1331, he escaped to Mount Kasagi and the temple sided with him. A battle at Mount Kasagi ensued and lasted for one month, resulting in complete destruction of the temple by fire. During the Muromachi Period (1336-1573 A.D.), efforts were made to revive the temple; however, it fell into ruin during the Edo Period (1603-1867 A.D.), and at the beginning of the Meiji Period (1868-1912 A.D.), it came to no longer be served by a resident head priest. In 1876 Jozei Osho (High Priest Jozei) started to reside in the run-down temple. Over 20 years of his efforts to revive the temple has borne fruit in the form of the present Kasagi-dera Temple.



行場めぐり／Tour around Ascetic Practice Area

笠置山の山頂付近には、花崗岩で造られた巨岩・奇石が多く、その特異な景観から山伏の修行場となっていた。巨岩には、弥勒石、虚空蔵石、文殊石、太鼓石、貝吹岩、ゆるぎ石などがあり信仰の対象となっている。これらの巨石を巡って笠置寺に訪れる。笠置山一巡コースは、所要時間も40分程度でちょっとしたハイキングに最適。

Near the top of Mount Kasagi there are many large rocks and bizarre stones made of granite. Offering peculiar scenery, the area became an ascetic practice place. The named rocks there include Miroku Ishi (Miroku Bosatsu Stone), Kokuzo Ishi (Kokuzo Bosatsu Stone), Monju Ishi (Monju Bosatsu Stone), Taiko Ishi (drum stone), Kaifuki Iwa (shell horn rock), and Yurugi Ishi (unstable stone), all of which are religious objects. The tour around the Mount Kasagi to visit these rocks to reach Kasagi-dera Temple is about 40-minute nice hiking course.