

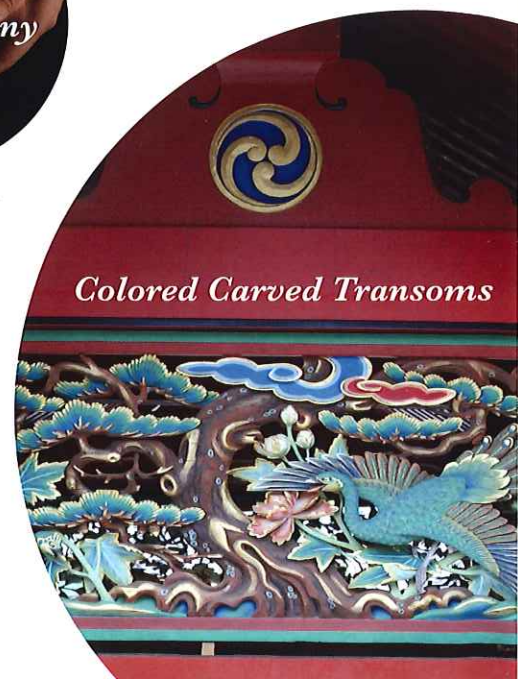
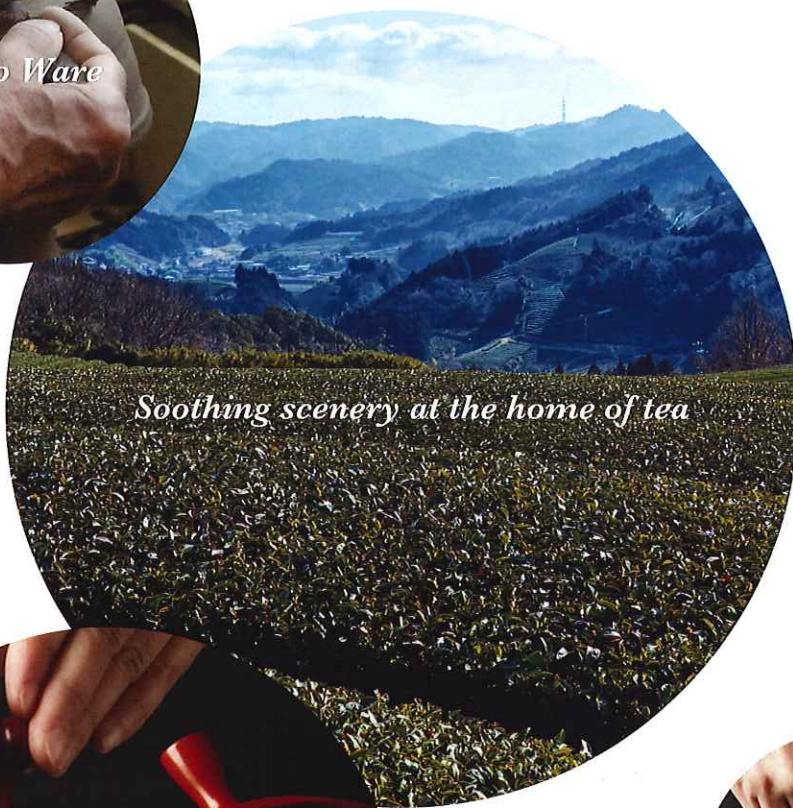
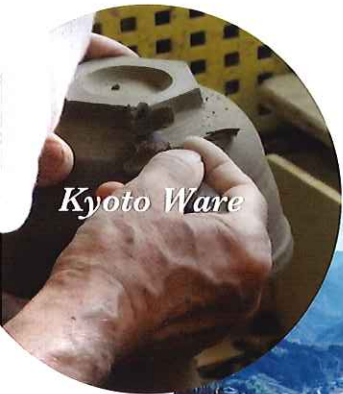
Kyoto Tea Country

Private Day-trips by

Chartered Taxi

Seven Hands-on Experiences and 12 Tour Routes

*Stray from the beaten-path, and explore the unique tea-culture
and landscape of the Yamashiro region*



お茶の京都

Discover
Premium
Green



JAPAN HERITAGE
日本遺産

Discover your own Kyoto Tea Country

Yamashiro Area, the Birthplace of Japanese Tea Culture

The Yamashiro area located in the southern part of Kyoto Prefecture is naturally blessed with the soil and climate suited to tea cultivation. Tea fields were first established in the Uji area during the Kamakura period (1185–1333) when the monk Myoe introduced seeds to villagers on return from his travels in China.

So began an 800-year history of tea cultivation and culture in Yamashiro, with Uji tea soon establishing itself as the most prized brand of tea during the Muromachi period (1336–1573), becoming the tea of choice for even the shogunate. This official endorsement prompted the establishment of the first dedicated premium tea plantation in Uji, Shichimeien.

Later during the Sengoku (feudal) era, the act of drinking tea was elevated to a Zen-like pursuit by tea master Sen no Rikyu and grew in popularity with the samurai class. The tea ceremony was born, ushering in a new era of tea appreciation and the demand for premium tea skyrocketed.

Forced to up their game, the Uji farmers responded by developing a covered growing technique for cultivating the richest, most flavorful tencha leaves, used to grind into the vibrant green matcha powdered tea used during the tea ceremony.

In the Edo era, Nagatani Soen developed a ground-breaking new method of steaming and rolling tea leaves, that resulted in a tea that retained its green color and intense flavor, a far cry from the sun-dried brown tea that had been the norm up until then. His technique sparked a revolution in sencha production, that remains largely unchanged to this day.

It was not long before Uji growers were able to take advantage of Soens' new steaming and rolling techniques, and apply them to their own shade-grown leaves, bringing to market the most coveted of all premium green teas - gyokuro.

Uji became synonymous with premium tea production and during the Meiji era (1868–1912) as Japanese tea began to reach foreign shores, the area of tea production rapidly expanded from the hillsides to the tops of the mountains, shaping the landscape that still exists to this day.

In 2015, the history and culture of Uji tea and its picturesque tea fields collectively received Japan Heritage status as "A Walk through the 800-year History of Japanese Tea".

Supported by the patronage of emperors throughout the centuries including Nobunaga, Hideyoshi, and Ieyasu, the Uji brand has continually set the standard for tea production in Japan. Through innovation, expansion and by embracing new technology in the pursuit of unerring quality, Uji is the birthplace of the green tea we know today - of sencha, matcha and gyokuro.

Journey through Yamashiro and follow the trail of tea, discovering a culture that has existed for over 800 years.

Experience 1



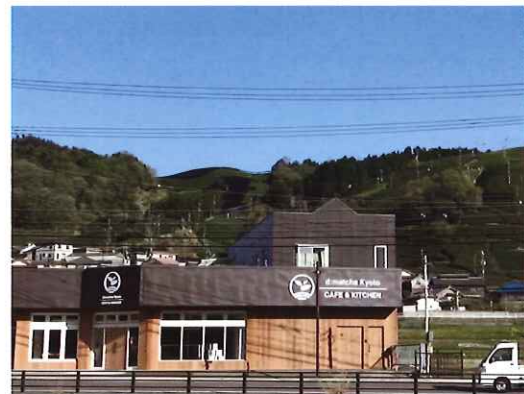
Sumiyama Pottery Village

Experience 2



Keihanna Commemorative Park

Experience 3



d:matcha Kyoto

Experience 4

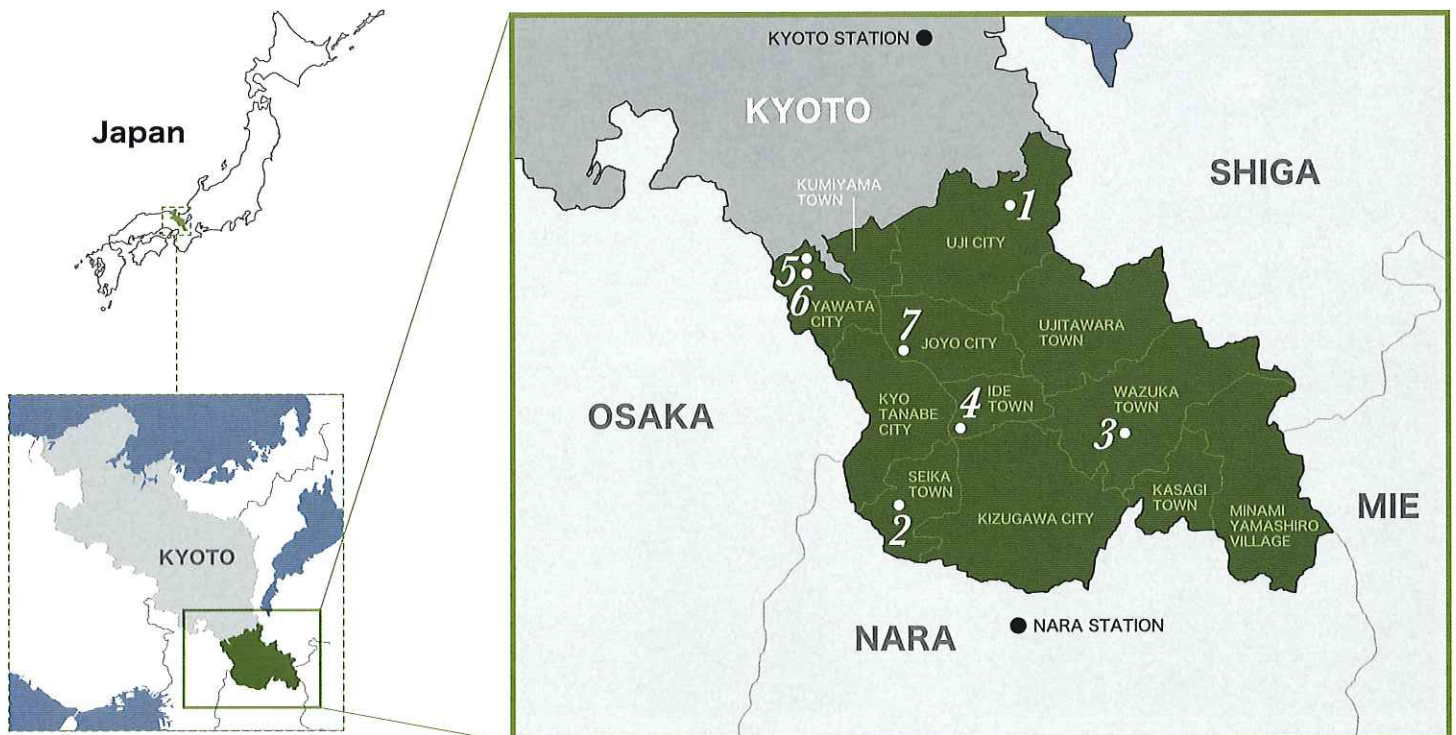


Nonohana Workshop
(Plant Dyeing Studio)

A Journey through Yamashiro: The Cultural, Historical and Spiritual Heartland of Kyoto Green Tea

The Yamashiro area in southern Kyoto prefecture is the historical center of Japanese green tea production in Kyoto. It covers an area that includes 12 cities, towns and villages, namely: Uji City, Jojo City, Yawata City, Kyotanabe City, Kizugawa City, Kumiya Town, Ide Town, Ujitawara Town, Kasagi Town, Wazuka Town, Seika Town, and Minamiyamashiro Village. Bordered by Kyoto city to the north, Nara prefecture to the south and Osaka prefecture to the west, it has long flourished as a hub of people, goods and culture, with many significant temples and shrines being constructed here. In addition to the Unesco World Heritage sites of Byodo-in Temple and Ujigami Shrine in Uji, exquisite temples and shrines designated as National Treasures and important cultural properties are dotted

around the area. But it is the humble tea plant that unites the area and continues to attract visitors from all over the world, eager to unearth its green tea secrets. From its picturesque tea fields, historic buildings and serene temples and shrines, to its contemporary architecture and restaurants, the Yamashiro area reveals a history and culture deeply intertwined with its 800-year tea heritage. Compared with the ever-popular Kyoto and Nara, Yamashiro benefits from being off the main tourist trail, affording the adventurous traveller an authentic Japanese experience without the crowds. Immerse yourself in this ancient land and your next cup of green tea will never have tasted better.



Experience 5



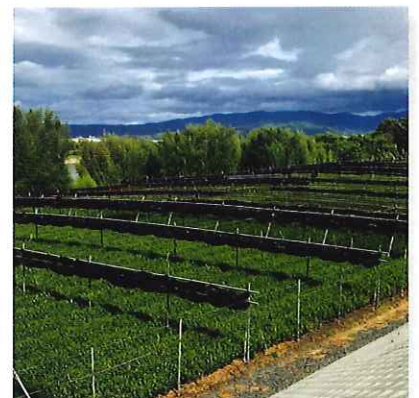
Iwashimizu Hachimangu Shrine

Experience 6



Shokado Garden & Art Museum

Experience 7



Magouemon
(Tea Experience)

What is the Ocha no Kyoto Private Day-trips by Chartered Taxi?

This is a sightseeing plan for foreign tourists brought to you by MK Taxi, a taxi company based in Kyoto that operates in 8 cities nationwide. This plan allows you to explore Kyoto in a chartered taxi, and offers a wide selection of seven different hands-on experiences in the Yamashiro region (a famous tea-growing area in Kyoto), as well as 12 different tour routes. You can create a personalized itinerary by choosing your favorite hands-on experience from the seven options on offer, and combine it with any of the 12 available tour routes. After departing Kyoto city, you can relax and enjoy your 4 to 8-hour

(including traveling time) sightseeing trip of the Yamashiro region by traveling in the comfort of the chartered taxi. The basic price for each plan will be the total of the cost of the selected hands-on experience and the chartered taxi fare. An English-speaking driver is included in all packages, but as an optional extra we can arrange for a professional interpreter to accompany you. For enquiries regarding the Taxi Tour Plan or details of the tour packages, please contact Ocha no Kyoto DMO. To make a reservation, please contact MK Travel directly.

Model (image)



4 seater (Toyota Crown)



6 seater (Nissan Serena)



8 seater (Toyota HiAce VIP edition)

Taxi Rates (tax incl.)

■ Standard (Mar 21–Jun 20, Oct 1–Nov 30) ■ Off season (All other dates)

※With English speaking driver.

	4 seater		6 seater		8 seater	
	Standard	Off season	Standard	Off season	Standard	Off season
4 hrs	26,950 JPY	24,970 JPY	30,500 JPY	28,300 JPY	42,000 JPY	39,900 JPY
5 hrs	33,050 JPY	30,630 JPY	36,600 JPY	33,960 JPY	49,600 JPY	47,080 JPY
6 hrs	39,150 JPY	36,290 JPY	42,700 JPY	39,620 JPY	57,200 JPY	54,260 JPY
7 hrs	45,250 JPY	41,950 JPY	48,800 JPY	45,280 JPY	64,800 JPY	61,440 JPY
8 hrs	51,350 JPY	47,610 JPY	54,900 JPY	50,940 JPY	72,400 JPY	68,620 JPY
+60 mins	6,100 JPY	5,660 JPY	6,100 JPY	5,660 JPY	7,600 JPY	7,180 JPY

※Rates are based on pickup/drop-off from the MK Taxi VIP Station at Kyoto Station Hachijoguchi, but pickup/dropoff from any hotel in Kyoto can be arranged at no additional charge.

Interpreter Guide Rates (tax incl.)

■ Standard (Mar 1– May 31, Oct 1– Nov 30) ■ Off season (All other dates)

	Standard	Off season
4 hrs	25,000 JPY	20,000 JPY

※Interpreter Guide Cancellation Fees

Should you wish to cancel your Interpreter booking, the following cancellation fees will apply:
 More than 2 days prior to departure = Basic Fee x No.Days Booked @ 60%
 Within 1 day prior to departure = Basic Fee x No.Days Booked @ 80%
 Same-day of departure = Basic Fee x No.Days Booked @ 100%

Contact

Reservations



MK Company Limited

TEL: 075-757-6212

(8:30~18:00)

General Enquiries



Ocha no Kyoto DMO

Keihan Uji Building 2F, 7-8 Ujiochikata, Uji-shi, Kyoto

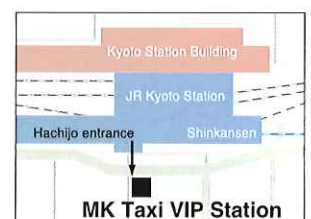
Near by JR Kyoto Station Hachijo entrance

MK Taxi VIP Station (8:00~18:00)

MK VIP station is located on the first floor of Ibis Styles Kyoto Station Hotel. Let us arrange you a sightseeing tour. You can start immediately!

MK Travel

Kyoto Prefectural Governor Registration Number 2-288
 47 Higashikujo Kamitonoda-cho, Minami-ku, Kyoto-shi, Kyoto



✉ t-travel@kyototeacountry.jp

Sumiyama Pottery Village, Uji City

Discover the world of Kyoyaki pottery



Visit a rural pottery village and its climbing kilns, guided by a local potter

Kyoyaki pottery (also known as Kiyomizu-yaki pottery) is one of the traditional crafts found in Kyoto. This 500-year-old art of traditional pottery has been passed down alongside the culinary cultures of Japanese tea and Kyoryori cuisine. Although the number of pottery production areas has gradually diminished with time, Sumiyama Pottery Village still exists today. This tour will bring you to traditional pottery workshops in the village and the rare "climbing kilns" that remain in the surrounding mountains. You will also get the chance to talk to local potters and acquaint yourself with this traditional art of Japan.

Sumiyama is a mountainous pottery village located several kilometers from Kyoto city. Kyoto's traditional pottery is still being made in this place that remains very much a part of nature.



Over the course of Kyoto's long history, traditional pottery techniques have been handed down within families from one generation of potters to the next. This allows the different unique techniques to continue to thrive today.



We will watch skilled craftsmen with more than a decade of experience make pottery in their workshops, and you will marvel at how they use their skills and equipment to bring out the distinctive shapes, colors, and forms of Kyoto pottery.



After the workshop tour, we will visit the "climbing kilns" where pottery is fired. These kilns are the only ones left in the entire country that fire Kyoto pottery directly over a naked flame. We have set aside some time for you to interact with the local potters, so feel free to ask them any questions.



Before we leave, there will be a Uji tea tasting session courtesy of "Ocha no Kyoto DMO" and you will receive a small gift from the pottery village. You can also purchase beautiful works at special prices that are only found in a pottery production area.

Charge (tax incl.)

■ Rates (2-8 people)

2 people	@10,500 JPY
3 people	@7,700 JPY
4 people	@6,300 JPY
5 people	@5,400 JPY
6 people	@4,900 JPY
7 people	@4,500 JPY
8 people	@4,200 JPY

※Please enquire about groups larger than 8 people

■ Taxi Rates (4 hrs)

4 seater	26,950 JPY
6 seater	30,500 JPY
8 seater	42,000 JPY

※With English speaking driver.

※Tours can be extended beyond 4 hours for an additional hourly fee. See the rate table on p.3 for details.

■ Interpreter Guide Rates (4 hrs)

Standard	25,000 JPY
Off season	20,000 JPY

※An English-speaking driver is included in all packages, but as an optional extra we can arrange for a professional interpreter to accompany you. See the rate table on p.3 for details.

Keihanna Commemorative Park, Seika Town

Experience the wonders of a Japanese traditional landscape garden



Take a walk in a picturesque Japanese garden guided by an expert, and create your own Zen garden

Kyoto, Osaka, and Nara are all popular destinations for foreign tourists. Located at the midpoint of these cities is Keihanna Science City, where you will find the tranquil Keihanna Commemorative Park. For this tour, we will take a walk in the vast Japanese garden Suikei-en located in the grounds of this park, guided by an expert. There will also be a unique hands-on activity where you have the chance to create a miniature Japanese rock garden.

Located in the expansive grounds of Suikei-en is the Kangetsukyo bridge, which rises to a height of 10 meters above water. From this bridge, you can get a panoramic view of the garden's impressive scenic features such as rock clusters, rice terraces, and bamboo groves. Feel free to ask the expert any questions that you may have when we are exploring the garden.



Ueyakato Landscape, the company responsible for the maintenance of numerous temples and gardens in Kyoto for over 170 years, is still preserving the beauty of Kyoto today with its immaculate landscaping technologies.



There will be a hands-on session for you to create a miniature Japanese rock garden. Talk to the garden expert to figure out where to place the rocks and the logic behind it. It is definitely not as difficult as you think to create your own little universe that you have in mind.



We also have a nature program for children that takes full advantage of the park's natural surroundings. This program lets you learn more about nature while having fun together as a family.



Keihanna Commemorative Park is highly accessible from Nara as well. We recommend that you make it part of your sightseeing plans when traveling to Nara from Kyoto.

Charge (tax incl.)

■ Rates (2-8 people)

2 people	@23,500 JPY
3 people	@16,000 JPY
4 people	@12,300 JPY
5 people	@10,000 JPY
6 people	@8,500 JPY
7 people	@7,500 JPY
8 people	@6,700 JPY

※Please enquire about groups larger than 8 people

■ Taxi Rates (4 hrs)

4 seater	26,950 JPY
6 seater	30,500 JPY
8 seater	42,000 JPY

※With English speaking driver.

※Tours can be extended beyond 4 hours for an additional hourly fee. See the rate table on p.3 for details.

■ Interpreter Guide Rates (4 hrs)

Standard	25,000 JPY
Off season	20,000 JPY

※An English-speaking driver is included in all packages, but as an optional extra we can arrange for a professional interpreter to accompany you. See the rate table on p.3 for details.

d:matcha Kyoto, Wazuka Town

Stroll in beautiful tea fields and indulge in green tea products



Hike through magnificent tea fields, and enjoy a lunch featuring green tea and matcha products

A member of the Most Beautiful Villages in Japan Association, Wazuka is a town famous for its alluring tea fields. In this tour, you will have the chance to learn more about Japanese tea while hiking through the beautiful tea fields of Wazuka. Here, you can enjoy a series of hands-on activities found only at a tea farm or tea factory, including sampling single-origin teas to savor their distinctive characters, manually grinding green tea leaves using a grindstone to make matcha, and enjoying a sumptuous lunch that features a variety of green tea items. An alternative itinerary without hiking is also available.

d:matcha Kyoto is a company that takes charge of every step in the process of tea production, from the cultivation of tea to the processing and sales of tea. It also runs d:matcha Kyoto CAFE & KITCHEN, where you can buy food and drinks made from locally produced tea.



The 30 to 45-minute hike will bring us to chemical-free tea fields in the Harayama or Yubune areas of Wazuka.



There will be a tea tasting session where we sample single-origin teas individually and compare their differences. You can also blend different tea leaves to create an original tea that you love.



This activity is accompanied by an English-speaking staff, whose detailed explanation will help us learn more about matcha.



At d:matcha Kyoto CAFE & KITCHEN, the flagship shop of d:matcha Kyoto overlooking the tea fields of Kamatsuka, we will sit down for a special lunch featuring many items made from Wazuka-produced tea.

Charge (tax incl.)

■ Rates (2-8 people)

2 people	@8,800 JPY
3 people	
4 people	
5 people	
6 people	
7 people	
8 people	

※Please enquire about groups larger than 8 people

■ Taxi Rates (4 hrs)

4 seater	26,950 JPY
6 seater	30,500 JPY
8 seater	42,000 JPY

※With English speaking driver.

※Tours can be extended beyond 4 hours for an additional hourly fee. See the rate table on p.3 for details.

■ Interpreter Guide Rates (4 hrs)

Standard	25,000 JPY
Off season	20,000 JPY

※An English-speaking driver is included in all packages, but as an optional extra we can arrange for a professional interpreter to accompany you. See the rate table on p.3 for details.

Nonohana Workshop, Ide Town

Create dyes from the colors of nature

Access

Time required
240
mins

Kyoto City

↓ [40 mins]

Ide Town: Nonohana Workshop

(60 - 90 mins)

↓ [40 mins]

Kyoto City



Feel the breath of Mother Nature and create dyes from the vibrant colors of nature

This tour allows you to experience making natural plant-based dyes at Nonohana Workshop in Ide, an area that is still steeped in nature. We will first learn the basics of natural dyes, before embarking on the preparation of plant materials to extract their dyes for use on scarves, and other fabrics. As the activity will be carefully adapted to each individual's ability and interest, this hands-on experience is perfect even for beginners who know very little about natural dyes.

Ide is a charming town lined with quaint houses, rice fields, and orchards, with a beautiful scenery typical of rural Japan. You can view cherry blossoms and kerria in spring, watch fireflies light up the summer night sky, and savor freshly harvested sweet potatoes, mandarin oranges, and persimmons in autumn.



Through its hands-on activities, Nonohana Workshop seeks to spread the joy of natural dyes that derive their respective colors from Mother Nature, and educate as many people as possible about the future potential of these dyes.



We begin by collecting plants and cutting them in water, before simmering them in water. You will be amazed by the magical colors that can be drawn out of these plants.



Choose between the "bokashi-zome" or easier "shibori-zome" dyeing techniques during the workshop.



Special scarves will be prepared for you to dye with during the workshop. You are welcome to take home your creation as a keepsake.

Charge (tax incl.)

■ Rates (2-8 people)

2 people	@9,700 JPY (1 instructor)
3 people	@7,500 JPY (1 instructor)
4 people	@6,400 JPY (1 instructor)
5 people	@8,400 JPY (2 instructors)
6 people	@7,500 JPY (2 instructors)
7 people	@6,900 JPY (2 instructors)
8 people	@6,400 JPY (2 instructors)

※Please enquire about groups larger than 8 people

※The availability of experience programs are revised on a monthly basis. Please check with OchaNoKyoto DMO for the latest information.

■ Taxi Rates (4 hrs)

4 seater	26,950 JPY
6 seater	30,500 JPY
8 seater	42,000 JPY

※With English speaking driver.

※Tours can be extended beyond 4 hours for an additional hourly fee. See the rate table on p.3 for details.

■ Interpreter Guide Rates (4 hrs)

Standard	25,000 JPY
Off season	20,000 JPY

※An English-speaking driver is included in all packages, but as an optional extra we can arrange for a professional interpreter to accompany you. See the rate table on p.3 for details.